

MANUFACTURING
SUPPLY CHAIN
PRODUCT
CARGO
CUSTOMER
DELIVERY
MANAGEMENT
FREIGHT



INNOVATION
BRANDING
SOLUTION
MARKETING
ANALYSIS
IDEAS
SUCCESS
MANAGEMENT



MANUFACTURING
SUPPLY CHAIN
PRODUCT
CARGO
CUSTOMER
DELIVERY
MANAGEMENT
FREIGHT



POWERME ENTERPRISE BI HUB

The Enterprise BI Experience
That Boosts the Value of Your
Information Assets



In today's business environment, enterprises need the right information at the right time more than ever in order to optimize decision-making and effectively compete. Unfortunately, for most enterprises, getting timely access to the right information is a challenge given the proliferation of BI tools and volume of information assets. Acquisitions, mergers and divestitures further add complexity to the challenge of managing information assets across the enterprise.




With PowerMe – Enterprise BI Hub, organizations will enable their BI users to get easy access as well as insights into all their information assets regardless of what platforms are being utilized (e.g. SFDC, SAP BusinessObjects, Oracle OBIEE, Tableau, QlikView, MicroStrategy, Cognos), **through one single interface customizable to the enterprise's unique needs.**

PowerMe – Enterprise BI Hub supports the management of information assets across the enterprise and enables quick decision making at all levels through cutting edge technology and intelligent search algorithms. It is a solution that epitomizes Agile BI and will elevate the value of your information assets.

Self-service analytic tools allow power users to quickly explore, blend and visualize data from disparate sources to produce new business insights and to validate business data requirements to support application development and data management.

"Business intelligence and analytics trend towards self-service at the Gartner Summit", CIO.com, April 2015

PowerMe's Capabilities & Features

 ENTERPRISE BI MANAGEMENT	 SELF-SERVICE BI	 CONNECTED PLATFORM
<ul style="list-style-type: none"> • Assemble - Organize and search BI assets easily with the help of relevant discovered information • Control - Manage information assets catalog, usage statistics and taxonomy • Scale - Reduce complexity by managing enterprise wide information assets on a single platform and by consolidating BI tools with common business capabilities 	<ul style="list-style-type: none"> • Access - A single intuitive tool with single source of entry to easily search and access enterprise-wide information assets • Publish - Create, reuse and consume assets from any platform and for any function 	<ul style="list-style-type: none"> • Visualize and Personalize – Personalized user experience enabling visual discovery of information • Engage and Collaborate – A context and user adaptive experience leveraging persona based profiles to share insights and have collaborative decision making across the organization

PowerMe's cloud-based or on-premise solution with its flexibility and scalability will help you:

Manage Information assets easily and more efficiently

- Access and search through a single unified tool
- Cross-platform ability (including SFDC, Office 365, BusinessObjects, Oracle OBIEE, Tableau, QlikView, MicroStrategy, and Cognos)
- Robust analytics on how assets are utilized and monitor critical usage periods like fiscal quarter ends.
- Secure login authentication and existing platforms' security settings remain in effect

Reduce Costs associated with managing information assets

- Direct, self-service access to users with no IT involvement
- Open source model means no additional licensing costs
- Potentially retire redundant systems and assets, saving on maintenance contracts.
- Quick setup and easy customizations – be up and running in weeks, not months, through built-in connectors for leading enterprise BI platforms and save with negligible overhead costs

Optimize Time for end users

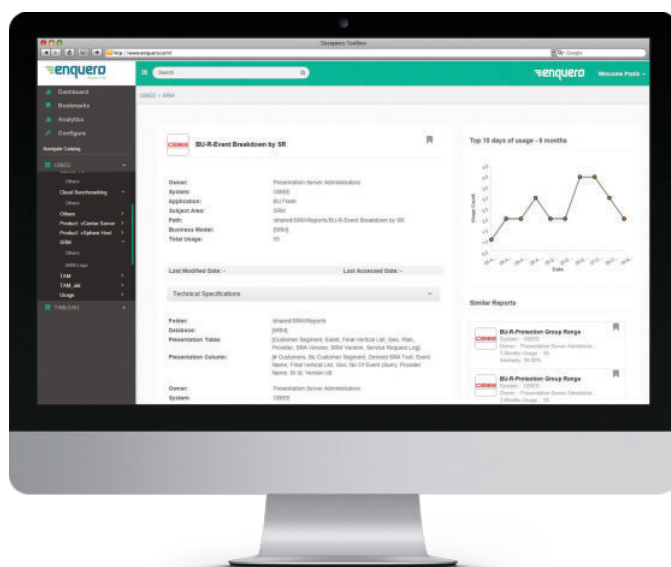
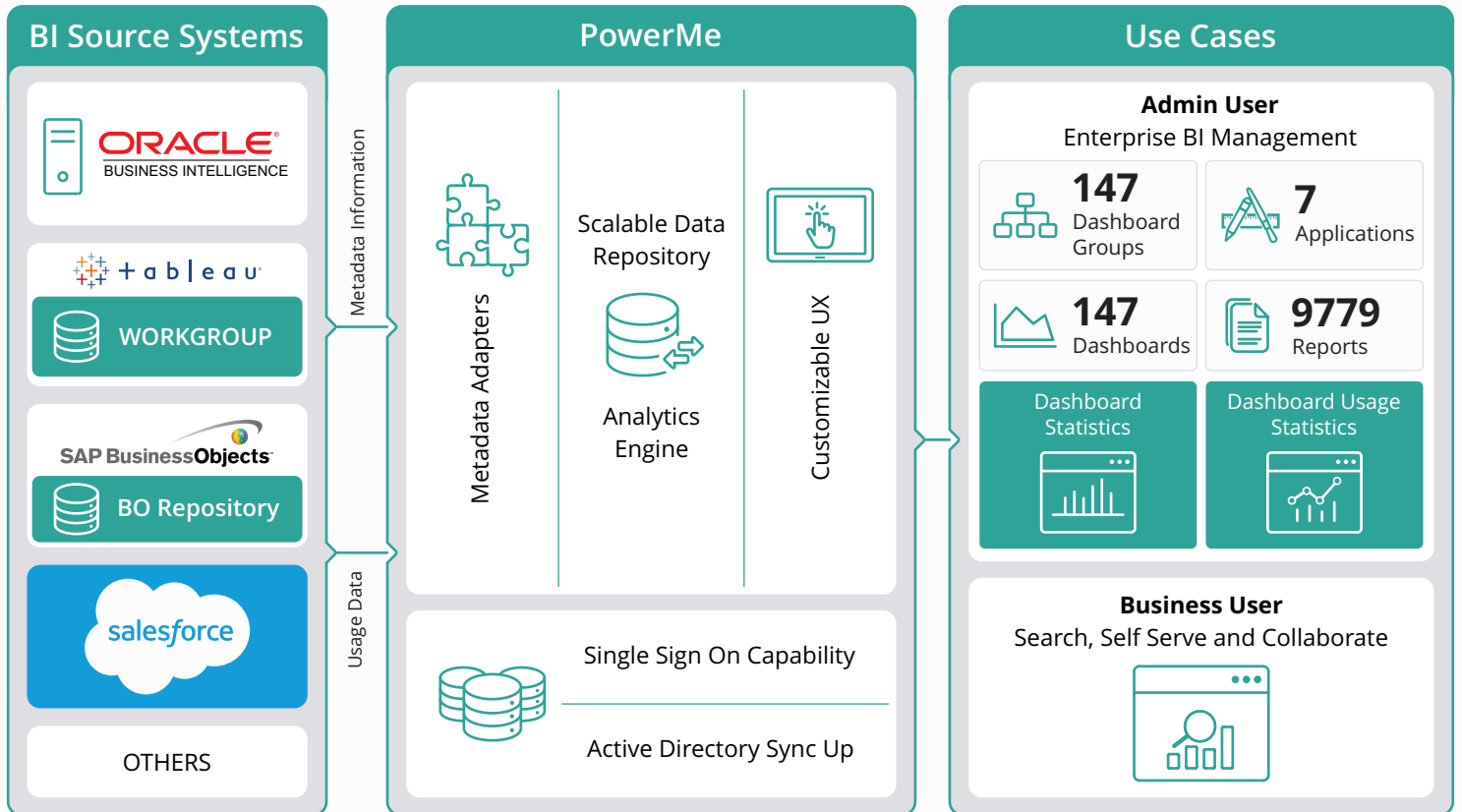
- Easy access to data and reports leading to shorter time to discovery/decisions and increased productivity
- Access to entire asset libraries thus increasing reuse of existing reports and reducing duplication
- Superior user experience, dashboards and customization to increase engagement and collaboration

Enquero has been instrumental in helping us execute on key IT projects including BI and security. In fact, in one instance, Enquero even took on a project that was started by another vendor but stalled and completed it successfully within a short timeframe. Needless to say Enquero is now part of our go-to partner and vendor pool.

Director - BI,
Leading Hi Tech Company,
Silicon Valley



Solution Architecture



Enquero's PowerMe is key to our evolving Enterprise Information Management strategy. We were dealing with numerous BI platforms and a large volume of reports and dashboards with possibility of duplicity across the install base. With PowerMe we were able to catalog all reporting assets, assess usage patterns and tag the unnecessary ones. It will support our rationalization and migration efforts thus saving us valuable time and money.

Ginger Victor,
Manager – EIM, VMware





Work with the winning team

Enquero is a consulting firm that utilizes innovative solutions and outcome-based thinking to deliver business capabilities that help organizations solve business and technology problems. Enquero's services and solutions focus on measurable outcomes, disruptive technologies and a differentiated delivery model that enable its customers to achieve agility in a world where technology is changing swiftly. Enquero serves customers in a variety of industries including hi tech, financial services, consumer goods and healthcare. The company is headquartered in Milpitas, CA (Silicon Valley) and has an Agile Delivery Center in Lafayette, LA.

Corporate Headquarters

1851 McCarthy Blvd, #115
Milpitas, CA 95035
+1 408 708 9307
info@enquero.com

Agile Delivery Center

Louisiana Immersive Technologies Enterprise (LITE)
537 Cajundome Blvd, Suite #237
Lafayette, LA 70506

www.enquero.com